

Benzoic acid–3,4-bis[(pyridin-3-ylmethyl)amino]cyclobut-3-ene-1,2-dione (1/2)

Andreas Lemmerer^{a*} and Susan A. Bourne^b

^aMolecular Sciences Institute, School of Chemistry, University of the Witwatersrand, Johannesburg, PO Wits 2050, South Africa, and ^bCentre for Supramolecular Chemistry Research, Department of Chemistry, University of Cape Town, Rondebosch 7701, South Africa

Correspondence e-mail: andreas.lemmerer@wits.ac.za

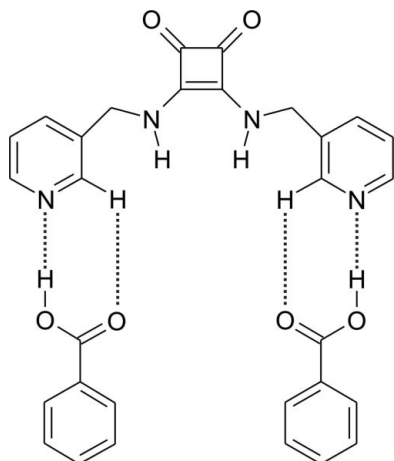
Received 23 December 2011; accepted 3 January 2012

Key indicators: single-crystal X-ray study; $T = 173$ K; mean $\sigma(\text{C}-\text{C}) = 0.002$ Å; R factor = 0.044; wR factor = 0.116; data-to-parameter ratio = 16.7.

In the title co-crystal, $\text{C}_{16}\text{H}_{14}\text{N}_4\text{O}_2 \cdot 2\text{C}_7\text{H}_6\text{O}_2$, the 3,4-bis-[(pyridin-3-ylmethyl)amino]cyclobut-3-ene-1,2-dione squareamide molecules assemble into chains along the b axis via $\text{N}-\text{H} \cdots \text{O}$ hydrogen bonds. The benzoic acid molecules then hydrogen bond to the pyridine rings via $\text{O}-\text{H} \cdots \text{N}$ hydrogen bonds, supported by weaker $\text{C}-\text{H} \cdots \text{O}$ hydrogen bonds, forming extended ribbons. The asymmetric unit consists of a half squareamide molecule, sitting on a special position around a twofold axis, and one benzoic acid molecule on a general position.

Related literature

For the synthesis of related squareamides and co-crystals, see: Liu *et al.* (2002).



Experimental

Crystal data

$\text{C}_{16}\text{H}_{14}\text{N}_4\text{O}_2 \cdot 2\text{C}_7\text{H}_6\text{O}_2$
 $M_r = 538.55$
 Monoclinic, $C2/c$
 $a = 24.617$ (5) Å
 $b = 6.0285$ (12) Å
 $c = 17.806$ (4) Å
 $\beta = 93.08$ (3)°

$V = 2638.6$ (9) Å³
 $Z = 4$
 Mo $K\alpha$ radiation
 $\mu = 0.10$ mm⁻¹
 $T = 173$ K
 $0.49 \times 0.16 \times 0.14$ mm

Data collection

Nonius KappaCCD area-detector diffractometer
 Absorption correction: integration (*XPREP*; Bruker, 2004)
 $T_{\min} = 0.944$, $T_{\max} = 0.989$

15016 measured reflections
 3166 independent reflections
 2110 reflections with $I > 2\sigma(I)$
 $R_{\text{int}} = 0.076$

Refinement

$R[F^2 > 2\sigma(F^2)] = 0.044$
 $wR(F^2) = 0.116$
 $S = 0.99$
 3166 reflections
 190 parameters

H atoms treated by a mixture of independent and constrained refinement
 $\Delta\rho_{\max} = 0.23$ e Å⁻³
 $\Delta\rho_{\min} = -0.24$ e Å⁻³

Table 1

Hydrogen-bond geometry (Å, °).

$D-\text{H} \cdots A$	$D-\text{H}$	$\text{H} \cdots A$	$D \cdots A$	$D-\text{H} \cdots A$
$\text{N1}-\text{H1} \cdots \text{O1}^1$	0.915 (16)	1.889 (17)	2.7697 (15)	161.0 (13)
$\text{O2}-\text{H2} \cdots \text{N2}$	1.07 (2)	1.57 (2)	2.6380 (15)	178.0 (17)
$\text{C2}-\text{H2A} \cdots \text{O3}$	0.95	2.68	3.3341 (18)	127

Symmetry code: (i) $x, y - 1, z$.

Data collection: *COLLECT* (Nonius, 2000); cell refinement: *DENZO-SMN* (Otwinowski & Minor, 1997); data reduction: *DENZO-SMN*; program(s) used to solve structure: *SHELXS97* (Sheldrick, 2008); program(s) used to refine structure: *SHELXL97* (Sheldrick, 2008); molecular graphics: *ORTEP-3 for Windows* (Farrugia, 1997) and *DIAMOND* (Brandenburg, 1999); software used to prepare material for publication: *WinGX* (Farrugia, 1999) and *PLATON* (Spek, 2009).

This work was supported by the University of the Witwatersrand, which is thanked for providing the infrastructure required to do this work.

Supplementary data and figures for this paper are available from the IUCr electronic archives (Reference: FY2039).

References

- Brandenburg, K. (1999). *DIAMOND*. Crystal Impact GbR, Bonn, Germany.
 Bruker (2004). *XPREP*. Bruker AXS Inc., Madison, Wisconsin, USA.
 Farrugia, L. J. (1997). *J. Appl. Cryst.* **30**, 565.
 Farrugia, L. J. (1999). *J. Appl. Cryst.* **32**, 837–838.
 Liu, Y., Lam, A. H. W., Fowler, F. W. & Lauher, J. W. (2002). *Mol. Cryst. Liq. Cryst.* **389**, 39–46.
 Nonius (2000). *COLLECT*. Nonius BV, Delft, The Netherlands.
 Otwinowski, Z. & Minor, W. (1997). *Methods in Enzymology*, Vol. 276, *Macromolecular Crystallography*, Part A, edited by C. W. Carter Jr & R. M. Sweet, pp. 307–326. New York: Academic Press.
 Sheldrick, G. M. (2008). *Acta Cryst.* **A64**, 112–122.
 Spek, A. L. (2009). *Acta Cryst.* **D65**, 148–155.

supplementary materials

Acta Cryst. (2012). E68, o384 [doi:10.1107/S1600536812000220]

Benzoic acid-3,4-bis[(pyridin-3-ylmethyl)amino]cyclobut-3-ene-1,2-dione (1/2)

A. Lemmerer and S. A. Bourne

Comment

The title compound is a further example of co-crystals formed by squareamide molecules, in this case 3,4-bis[(pyridin-3-ylmethyl)amino]cyclobut-3-ene-1,2-dione, with carboxylic acid containing co-former molecules. Related co-crystals where the squareamide molecule has the pyridine N atom in the 4 position are reported by Liu *et al.* (2002). The asymmetric unit consists of one half squareamide molecule, sitting around a twofold axis, and one complete benzoic acid molecule, on a general position (Fig. 1). The squareamide self-assembles into chains using the two N—H···O hydrogen bonds formed from the two amine N—H groups to the diketones. The pyridine rings then act as hydrogen bond acceptors to the carboxylic acid functional group of the two benzoic acid molecules (Fig. 2).

Experimental

The title squareamide compound was synthesized according to literature procedures (Liu *et al.*, 2002) by double condensation of diethyl squarate with 1-(pyridin-3-yl)methanamine in ethanol by stirring for 12 h. The resulting solid was filtered and dried. The squareamide was then dissolved in a 1:2 stoichiometric ratio with benzoic acid in a 1/1 *v/v* mixture of methanol and water. Plate-like, colourless crystals were harvested after a few days by slow evaporation at ambient conditions.

Refinement

The C-bound H atoms were geometrically placed with C—H bond lengths of 0.95 Å (aromatic CH) and 0.99 Å (methylene CH₂) and were refined as riding with $U_{\text{iso}}(\text{H}) = 1.2U_{\text{eq}}(\text{C})$. The N-bound and O-bound H atoms were located in the difference map and their coordinates and isotropic displacement parameters were refined freely.

Figures

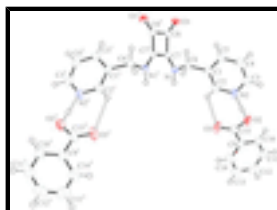


Fig. 1. The asymmetric unit of (I) showing the atom numbering scheme. Displacement ellipsoids are shown at the 50% probability level. Atoms with superscript *i* are generated by the symmetry operation $(-x, y, -z + 1/2)$.

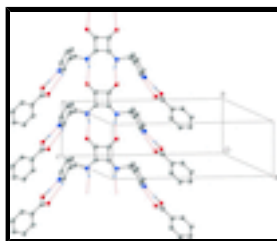


Fig. 2. Hydrogen bonding diagram of the ribbons of (I). Intermolecular N—H···O and O—H···N hydrogen bonds are shown as dashed red lines.

Benzoic acid–3,4-bis[(pyridin-3-ylmethyl)amino]cyclobut-3-ene-1,2-dione (1/2)

Crystal data

C₁₆H₁₄N₄O₂·2C₇H₆O₂

$M_r = 538.55$

Monoclinic, *C2/c*

Hall symbol: -C 2yc

$a = 24.617 (5) \text{ \AA}$

$b = 6.0285 (12) \text{ \AA}$

$c = 17.806 (4) \text{ \AA}$

$\beta = 93.08 (3)^\circ$

$V = 2638.6 (9) \text{ \AA}^3$

$Z = 4$

$F(000) = 1128$

$D_x = 1.356 \text{ Mg m}^{-3}$

Mo $K\alpha$ radiation, $\lambda = 0.71073 \text{ \AA}$

Cell parameters from 16004 reflections

$\theta = 0.2\text{--}28.3^\circ$

$\mu = 0.10 \text{ mm}^{-1}$

$T = 173 \text{ K}$

Plate, colourless

$0.49 \times 0.16 \times 0.14 \text{ mm}$

Data collection

Nonius KappaCCD area-detector diffractometer

$2.0^\circ \omega$ scans

Absorption correction: integration (*XPREP*; Bruker, 2004)

$T_{\min} = 0.944$, $T_{\max} = 0.989$

15016 measured reflections

3166 independent reflections

2110 reflections with $I > 2\sigma(I)$

$R_{\text{int}} = 0.076$

$\theta_{\max} = 28.0^\circ$, $\theta_{\min} = 2.3^\circ$

$h = -32 \rightarrow 26$

$k = -7 \rightarrow 7$

$l = -23 \rightarrow 21$

Refinement

Refinement on F^2

Least-squares matrix: full

$R[F^2 > 2\sigma(F^2)] = 0.044$

$wR(F^2) = 0.116$

$S = 0.99$

3166 reflections

190 parameters

0 restraints

H atoms treated by a mixture of independent and constrained refinement

$w = 1/[\sigma^2(F_o^2) + (0.0659P)^2 +]$

where $P = (F_o^2 + 2F_c^2)/3$

$(\Delta/\sigma)_{\max} < 0.001$

$\Delta\rho_{\max} = 0.23 \text{ e \AA}^{-3}$

$\Delta\rho_{\min} = -0.24 \text{ e \AA}^{-3}$

Extinction correction: *SHELXL97* (Sheldrick, 2008),

$F_c^* = kFc[1 + 0.001xFc^2\lambda^3/\sin(2\theta)]^{-1/4}$

Extinction coefficient: 0.0097 (11)

Special details

Experimental. Numerical integration absorption corrections based on indexed crystal faces were applied using the *XPREP* routine (Bruker, 2004).

Geometry. All e.s.d.'s (except the e.s.d. in the dihedral angle between two l.s. planes) are estimated using the full covariance matrix. The cell e.s.d.'s are taken into account individually in the estimation of e.s.d.'s in distances, angles and torsion angles; correlations

between e.s.d.'s in cell parameters are only used when they are defined by crystal symmetry. An approximate (isotropic) treatment of cell e.s.d.'s is used for estimating e.s.d.'s involving l.s. planes.

Fractional atomic coordinates and isotropic or equivalent isotropic displacement parameters (\AA^2)

	<i>x</i>	<i>y</i>	<i>z</i>	$U_{\text{iso}}^*/U_{\text{eq}}$
C1	0.09548 (5)	0.7538 (2)	0.57965 (7)	0.0286 (3)
C2	0.10973 (5)	0.5561 (2)	0.54679 (7)	0.0333 (3)
H2A	0.0814	0.4569	0.5308	0.04*
C3	0.20066 (6)	0.6353 (3)	0.55968 (8)	0.0417 (4)
H3	0.2373	0.5946	0.5526	0.05*
C4	0.19060 (6)	0.8346 (3)	0.59354 (8)	0.0430 (4)
H4	0.2198	0.929	0.61	0.052*
C5	0.13726 (6)	0.8956 (2)	0.60321 (7)	0.0366 (3)
H5	0.1293	1.0337	0.6259	0.044*
C6	0.03667 (5)	0.8124 (2)	0.58837 (7)	0.0307 (3)
H6A	0.0312	0.9723	0.5777	0.037*
H6B	0.0136	0.7275	0.5513	0.037*
C7	0.00897 (5)	0.91990 (19)	0.71280 (7)	0.0261 (3)
C8	0.01001 (5)	1.16213 (19)	0.71131 (7)	0.0293 (3)
N1	0.02002 (4)	0.76350 (17)	0.66414 (6)	0.0298 (3)
H1	0.0195 (6)	0.616 (3)	0.6757 (8)	0.041 (4)*
N2	0.16108 (5)	0.49629 (19)	0.53623 (6)	0.0384 (3)
O1	0.02247 (4)	1.30418 (13)	0.66529 (5)	0.0373 (3)
C9	0.14385 (5)	-0.1060 (2)	0.36020 (7)	0.0350 (3)
C10	0.18500 (6)	-0.0836 (2)	0.31016 (8)	0.0423 (4)
H10	0.208	0.0431	0.3128	0.051*
C11	0.19255 (7)	-0.2448 (3)	0.25655 (9)	0.0513 (4)
H11	0.2201	-0.2273	0.2217	0.062*
C12	0.16006 (8)	-0.4312 (3)	0.25359 (9)	0.0573 (5)
H12	0.1657	-0.543	0.2172	0.069*
C13	0.11934 (8)	-0.4557 (3)	0.30324 (10)	0.0559 (5)
H13	0.0972	-0.5848	0.3013	0.067*
C14	0.11075 (6)	-0.2923 (3)	0.35590 (8)	0.0452 (4)
H14	0.0821	-0.3078	0.3892	0.054*
C15	0.13450 (6)	0.0665 (2)	0.41783 (8)	0.0374 (4)
O2	0.17883 (4)	0.18069 (17)	0.43789 (6)	0.0443 (3)
H2	0.1708 (7)	0.309 (3)	0.4774 (11)	0.080 (6)*
O3	0.09068 (4)	0.09691 (18)	0.44435 (6)	0.0484 (3)

Atomic displacement parameters (\AA^2)

	U^{11}	U^{22}	U^{33}	U^{12}	U^{13}	U^{23}
C1	0.0315 (7)	0.0303 (7)	0.0247 (6)	0.0022 (5)	0.0069 (5)	0.0042 (5)
C2	0.0308 (7)	0.0342 (7)	0.0355 (7)	0.0025 (6)	0.0083 (6)	-0.0004 (5)
C3	0.0282 (8)	0.0576 (9)	0.0400 (8)	0.0050 (7)	0.0092 (6)	0.0049 (7)
C4	0.0339 (8)	0.0501 (9)	0.0452 (8)	-0.0078 (7)	0.0033 (6)	0.0024 (7)
C5	0.0401 (8)	0.0324 (7)	0.0376 (8)	-0.0007 (6)	0.0065 (6)	0.0003 (6)

supplementary materials

C6	0.0320 (7)	0.0289 (7)	0.0319 (7)	0.0048 (5)	0.0081 (5)	0.0008 (5)
C7	0.0227 (6)	0.0211 (6)	0.0353 (7)	0.0006 (5)	0.0073 (5)	0.0000 (5)
C8	0.0282 (7)	0.0219 (6)	0.0384 (7)	0.0012 (5)	0.0084 (5)	0.0004 (5)
N1	0.0355 (6)	0.0203 (6)	0.0348 (6)	0.0017 (5)	0.0130 (5)	0.0013 (4)
N2	0.0335 (7)	0.0443 (7)	0.0384 (7)	0.0092 (5)	0.0103 (5)	-0.0012 (5)
O1	0.0468 (6)	0.0225 (5)	0.0440 (5)	-0.0014 (4)	0.0159 (4)	0.0046 (4)
C9	0.0308 (7)	0.0419 (8)	0.0324 (7)	0.0077 (6)	0.0018 (6)	0.0064 (6)
C10	0.0372 (8)	0.0459 (8)	0.0445 (9)	0.0044 (6)	0.0093 (7)	0.0008 (6)
C11	0.0507 (10)	0.0624 (11)	0.0417 (9)	0.0148 (8)	0.0099 (7)	-0.0028 (8)
C12	0.0702 (12)	0.0560 (11)	0.0441 (9)	0.0146 (9)	-0.0110 (9)	-0.0100 (7)
C13	0.0640 (12)	0.0507 (10)	0.0510 (10)	-0.0084 (8)	-0.0155 (9)	-0.0003 (8)
C14	0.0393 (9)	0.0593 (10)	0.0367 (8)	-0.0032 (7)	-0.0025 (6)	0.0077 (7)
C15	0.0310 (8)	0.0460 (9)	0.0356 (8)	0.0100 (6)	0.0066 (6)	0.0074 (6)
O2	0.0331 (6)	0.0490 (6)	0.0518 (6)	0.0063 (5)	0.0112 (5)	-0.0115 (5)
O3	0.0322 (6)	0.0669 (7)	0.0472 (6)	0.0120 (5)	0.0133 (5)	0.0027 (5)

Geometric parameters (Å, °)

C1—C2	1.3816 (18)	C8—C8 ⁱ	1.488 (3)
C1—C5	1.3849 (19)	N1—H1	0.915 (16)
C1—C6	1.5061 (18)	C9—C14	1.387 (2)
C2—N2	1.3374 (17)	C9—C10	1.391 (2)
C2—H2A	0.95	C9—C15	1.487 (2)
C3—N2	1.3351 (19)	C10—C11	1.382 (2)
C3—C4	1.373 (2)	C10—H10	0.95
C3—H3	0.95	C11—C12	1.378 (2)
C4—C5	1.383 (2)	C11—H11	0.95
C4—H4	0.95	C12—C13	1.380 (3)
C5—H5	0.95	C12—H12	0.95
C6—N1	1.4612 (16)	C13—C14	1.384 (2)
C6—H6A	0.99	C13—H13	0.95
C6—H6B	0.99	C14—H14	0.95
C7—N1	1.3187 (16)	C15—O3	1.2146 (16)
C7—C7 ⁱ	1.419 (2)	C15—O2	1.3231 (17)
C7—C8	1.4607 (17)	O2—H2	1.07 (2)
C8—O1	1.2354 (15)		
C2—C1—C5	117.35 (12)	C7—N1—C6	122.71 (11)
C2—C1—C6	120.89 (12)	C7—N1—H1	122.9 (9)
C5—C1—C6	121.76 (12)	C6—N1—H1	114.3 (9)
N2—C2—C1	123.74 (13)	C3—N2—C2	117.80 (12)
N2—C2—H2A	118.1	C14—C9—C10	119.28 (14)
C1—C2—H2A	118.1	C14—C9—C15	119.46 (13)
N2—C3—C4	122.74 (13)	C10—C9—C15	121.26 (13)
N2—C3—H3	118.6	C11—C10—C9	120.24 (15)
C4—C3—H3	118.6	C11—C10—H10	119.9
C3—C4—C5	118.83 (14)	C9—C10—H10	119.9
C3—C4—H4	120.6	C12—C11—C10	120.03 (16)
C5—C4—H4	120.6	C12—C11—H11	120

C4—C5—C1	119.53 (13)	C10—C11—H11	120
C4—C5—H5	120.2	C11—C12—C13	120.19 (15)
C1—C5—H5	120.2	C11—C12—H12	119.9
N1—C6—C1	111.52 (10)	C13—C12—H12	119.9
N1—C6—H6A	109.3	C12—C13—C14	120.03 (16)
C1—C6—H6A	109.3	C12—C13—H13	120
N1—C6—H6B	109.3	C14—C13—H13	120
C1—C6—H6B	109.3	C13—C14—C9	120.20 (16)
H6A—C6—H6B	108	C13—C14—H14	119.9
N1—C7—C7 ⁱ	134.35 (7)	C9—C14—H14	119.9
N1—C7—C8	134.30 (12)	O3—C15—O2	123.58 (13)
C7 ⁱ —C7—C8	91.35 (7)	O3—C15—C9	123.19 (14)
O1—C8—C7	135.25 (12)	O2—C15—C9	113.22 (12)
O1—C8—C8 ⁱ	136.11 (7)	C15—O2—H2	111.9 (10)
C7—C8—C8 ⁱ	88.64 (7)		
C5—C1—C2—N2	-0.52 (19)	C4—C3—N2—C2	-0.2 (2)
C6—C1—C2—N2	178.76 (11)	C1—C2—N2—C3	0.8 (2)
N2—C3—C4—C5	-0.7 (2)	C14—C9—C10—C11	0.3 (2)
C3—C4—C5—C1	0.9 (2)	C15—C9—C10—C11	-179.30 (13)
C2—C1—C5—C4	-0.35 (19)	C9—C10—C11—C12	-1.5 (2)
C6—C1—C5—C4	-179.62 (12)	C10—C11—C12—C13	1.1 (2)
C2—C1—C6—N1	98.57 (14)	C11—C12—C13—C14	0.5 (2)
C5—C1—C6—N1	-82.19 (14)	C12—C13—C14—C9	-1.6 (2)
N1—C7—C8—O1	-1.8 (3)	C10—C9—C14—C13	1.2 (2)
C7 ⁱ —C7—C8—O1	178.55 (15)	C15—C9—C14—C13	-179.17 (13)
N1—C7—C8—C8 ⁱ	178.45 (15)	C14—C9—C15—O3	-25.7 (2)
C7 ⁱ —C7—C8—C8 ⁱ	-1.20 (14)	C10—C9—C15—O3	153.96 (14)
C7 ⁱ —C7—N1—C6	178.04 (17)	C14—C9—C15—O2	153.46 (12)
C8—C7—N1—C6	-1.5 (2)	C10—C9—C15—O2	-26.92 (18)
C1—C6—N1—C7	110.22 (13)		

Symmetry codes: (i) $-x, y, -z+3/2$.

Hydrogen-bond geometry ($\text{\AA}, ^\circ$)

<i>D</i> —H \cdots <i>A</i>	<i>D</i> —H	H \cdots <i>A</i>	<i>D</i> \cdots <i>A</i>	<i>D</i> —H \cdots <i>A</i>
N1—H1 \cdots O1 ⁱⁱ	0.915 (16)	1.889 (17)	2.7697 (15)	161.0 (13)
O2—H2 \cdots N2	1.07 (2)	1.57 (2)	2.6380 (15)	178.0 (17)
C2—H2A \cdots O3	0.95	2.68	3.3341 (18)	127

Symmetry codes: (ii) $x, y-1, z$.

Fig. 1

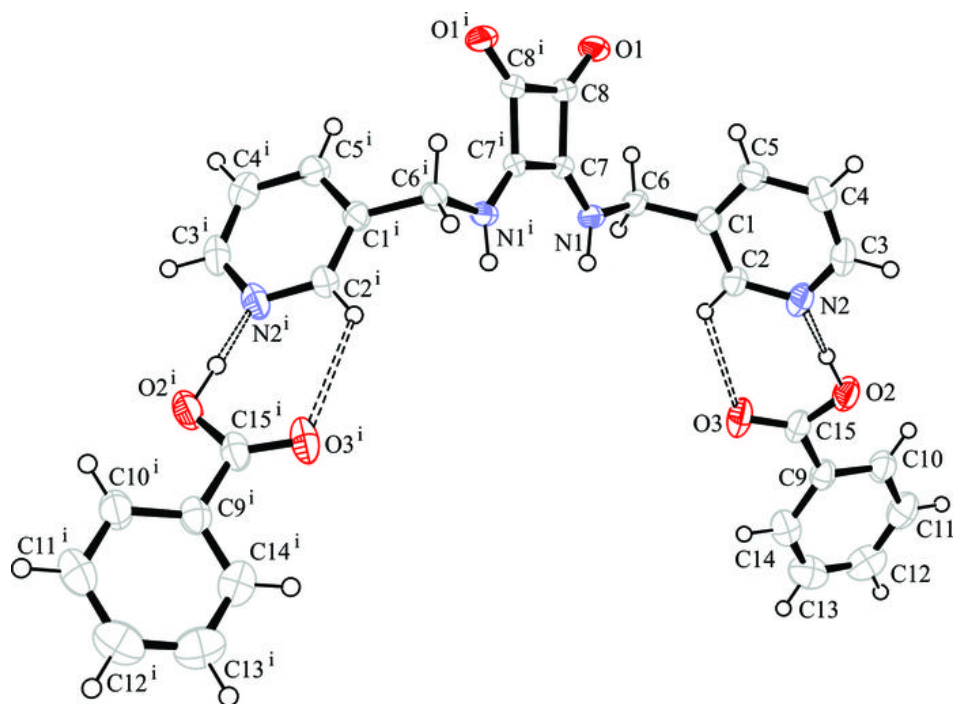


Fig. 2

